



INTERMATIC®
ASTRONOMIC TIME SWITCH

**PROGRAMMABLE SUNRISE TO
SUNSET 7 DAYS A WEEK**

www.intermatic.com

INTERMATIC®

ASTRONOMIC TIME SWITCH

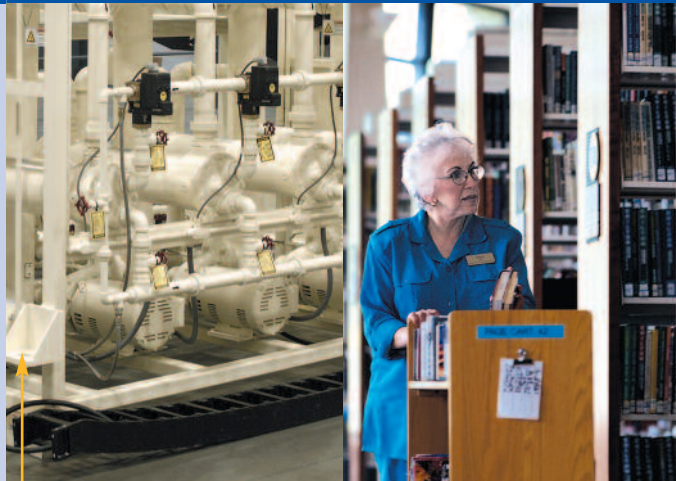


ET8215C/CR

ET8000 Series

Intermatic's Electronic Astronomic 7-Day Time Switch automatically switches loads according to a preset weekly schedule with up-to-the-minute accuracy. The astronomic feature provides sunset ON and sunrise OFF settings to eliminate the need for separate photo control devices. The independent 7-day programming provides complete flexibility for applications where load switching differs each day of the week. Astronomic programming can be combined with independent programs to provide a sunset ON and time OFF program.

7-Day Astronomic 30 Amp

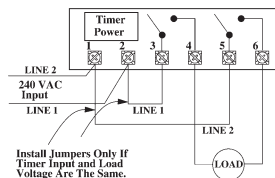


FOR CONTROLLING

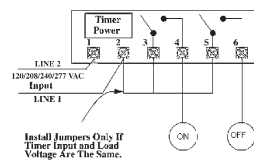
- Lighting
- HVAC
- Heating/ventilation equipment
- Pumps
- Fans
- Livestock feeders
- Poultry equipment

SWITCH RATINGS (per pole)

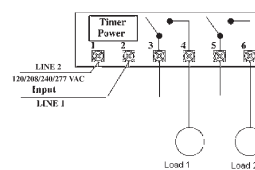
- 30A inductive/resistive, 120/208/240/277 V, 60 Hz
- 20A ballast 120–277 V 60 Hz
- 20A resistive - 28 V DC
- 5A tungsten 240 V 60 Hz
- 1 HP 120 V 60 Hz
- 2 HP 240 V 60 Hz
- DPST



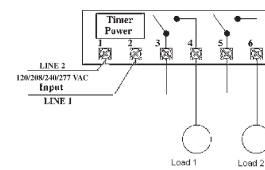
Simultaneous Operation
Configured for 240VAC DPST load with circuit board jumper set to SIM



Pulse Operation
Configured for pulse SPST load with circuit board jumper set to PUL



Independent Operation
Configured for two SPST loads with circuit board jumper set to IND



Simultaneous Operation
Configured for DPST loads with circuit board jumper set to SIM

PROGRAMMABLE SUNRISE TO SUNSET 7 DAYS A WEEK



ET8I15C/CR



ET80I5C/CR

7-Day Astronomic 20 Amp



FOR CONTROLLING

- Lighting
- HVAC
- Heating/ventilation equipment
- Pumps
- Fans
- Livestock feeders
- Poultry equipment

SWITCH RATINGS (NO/NC)

- 20A/10A inductive/resistive, 120/208/240/277 VAC, 60 Hz
- 20A/10A resistive - 28 VDC
- 6A/3A ballast 277 V 60 Hz
- 5A/3A, 240 V tungsten
- 1 HP/ 1/4 HP 120 V 60 Hz
- 2 HP/ 1/2 HP 240 V 60 Hz
- SPDT

7-Day Astronomic 30 Amp

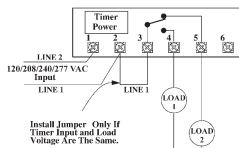


FOR CONTROLLING

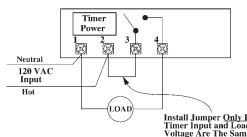
- Lighting
- HVAC
- Heating/ventilation equipment
- Pumps
- Fans
- Livestock feeders
- Poultry equipment

SWITCH RATINGS (per pole)

- 30A inductive/resistive, 120/208/240/277 V, 60 Hz
- 20A ballast 120-277 V 60 Hz
- 20A resistive - 28 V DC
- 5A tungsten 240 V 60 Hz
- 1 HP 120 V 60 Hz
- 2 HP 240 V 60 Hz
- SPST



Configured for SPDT load switching



Configured for SPST 120VAC load

For more information go to

➔ www.intermatic.com

- Copy & paste specifier text
- Downloadable programming help and wiring diagrams

INTERMATIC®

ASTRONOMIC TIME SWITCH



ET8000 Series Specifications

Model #	Interval	Maximum Switch Rating	Motor Rating	Switch Rating	Contact	Circuits
ET8015C/CR	7 day	30 A inductive/resistive, 120/208/240/277V	1 HP 120VAC	60 Hz	SPST	1
		20 A ballast 120–277V	2 HP 240VAC			
		5 A tungsten 240V				
		20 A resistive 28 VDC				
ET8115C/CR	7 day	20/10 A inductive/resistive, 120/208/240/277V	1 HP 120VAC	60 Hz	SPDT	1
		6/3 A ballast 277V	2 HP 240VAC			
		5/3 A tungsten 240V				
		20 A/10 A resistive 28 VDC				
ET8215C/CR	7 day	30 A inductive/resistive, 120/208/240/277V	1 HP 120VAC	60 Hz	DPST	2
		20 A ballast 120–277V	2 HP 240VAC			
		5 A tungsten 240V				
		20 A resistive 28 VDC				

ET8000 Series Notes

Indoor Case (C Suffix) NEMA 1 drawn steel; 7-3/4" (19.7 cm) H, 5" (12.7 cm) W, 3" (7.6 cm) D; gray finish w/lockable spring hasp

Indoor/Outdoor Case (CR Suffix) NEMA 3R raintight enclosure, drawn steel; 9-3/8" (23.8 cm) H, 5-1/2" (14.0 cm) W, 3-5/8" (9.2 cm) D; gray finish w/lockable spring hasp

Carry-Over Two AAA industrial grade alkaline batteries supplied to maintain program and accurate timekeeping for 2 years minimum

Min. ON/OFF Time 1 minute

Max. ON/OFF Time 6 days 23 hours 59 minutes

Wire Size AWG #10 through #18

Knockouts Combination 1/2 - 3/4" (one on back and each side, two on bottom)

Shipping Weight 2.5 lbs. (1.1 kg)

Intermatic Incorporated
Spring Grove, Illinois 60081-9698

www.intermatic.com

©2005 Intermatic, Inc.
Printed in U.S.A. 300ET10013

